



PARAS[®]

COMPRESSORS

(Since 1987)



1 H.P to 250 H.P Air & Water Cooled,
Reciprocating Compressors.
High Pressure Compressors,
Duplex Compressors
Vacuum Pumps, Bore well Pumps
Refrigerated Air Dryer, Heatless Air Dryer
Interchangeable highly quality controlled genuine Spare Parts
After Cooler with Moisture separator,
Candle filter/Activated Carbon filter



*Quality with Right Selection
Always on Priority*



www.parascompressor.com // www.compressorsmanufacturer.com



ISO 9001:2015 Company

**(Multi Stage High Pressure Air Cooled/Water Cooled (Optional Inter Cooling)
for higher performance & longer reliability of moving components)**



Model	Motor H.P.	No. of Cylinder	Piston Displacement C.F.M	Free Air Delivery C.F.M	Max. Pressure PSIG Kg/cm ²		Air Receiver (ltrs) (hori)
PC-23-231	3	2	7.4	4.8	500	35.15	100/150
PC-23-251	5	2	10.8	6.45	500	35.15	100/150
PC-23-71T4	5	2	13.1	6.4	1000	70.00	200/300
PC-23-7T2	7.5	2	24	14.3	500	35.15	300
PC-23-7T2	10	2	36	23	285	20	300
PC-23-7T2	10	2	31.95	18.35	500	35.15	300
PC-23-7T2	12.5	2	36	29	355	25	300/500
PC-23-7T2	12.5	2	36	21.6	500	35.15	300/500
PC-23-7T2	15	2	40.5	24.3	500	35.15	300/500
PC-23-15T2(SP)	15	3	41.22	34	425	30	500
PC-23-15T2	15	3	35.75	26.6	1000	70	500
PC-23-15T2(SP)	20	3	49.5	42	425	30	500
PC-23-15T2	20	3	49.5	36.9	1000	70	500
PC-23-15T2	15	3	41.2	31.41	500	35.15	500
PC-23-15T2	20	3	49.5	37.7	500	35.15	500
PC-23-20H	20	3	72.68	52	355	25	500
PC-23-25H	25	3	98.5	70	355	25	500

Duplex Compressor

Model	Motor H.P.	No. of Cylinder	Piston Displacement C.F.M	Free Air Delivery C.F.M	Max. Pressure PSIG Kg/cm ²		Air Receiver (ltrs) (hori)
PC-23-15T2 DUPLEX	20+20	3+3	98.8	75.4	500	35.15	500
PC-23-20H DUPLEX	20+20	3+3	145	104	355	25	500
PC-23-25H DUPLEX	25+25	3+3	197	140	355	25	500

Designed for the PET Industry

Paras Compressors meets the unique challenges of PET bottle blowing with advanced air compressor technologies tailored to your individual production requirements. Paras Compressors Multi-stage reciprocating compressors provide the critical performance you need to maximize your productivity.

Paras Compressors PET compressors provide :

- Reliable operation in punishing environments
- High efficiency reducing your lifecycle cost
- Robust construction enhances productivity
- Customizable configurations to meet any operational need

Balanced Opposed, Double Acting, Water-cooled, Three Stage Oil Free Compressor

The Most Power Efficient Low Cost Solution For Pet Blowing Application Industries:

Pet Bottling, Air Blast Circuit Breakers, Pharmaceuticals, Gas Transmission & Distribution, Defense Establishments, Shipyards, Oil Exploration, Pneumatic Testing, Engine Starting etc

Booster Compressor

Model	Max. Pressure		CFM	Power Saving %
	PSIG	kg/cm ²		
115 T2 BT	500	35.15	114.50	29.90
115 T2 BT	500	35.15	144.70	36.90

Pressure & CFM configurations available as per customer's requirement

Oil Free- High Pressure Compressor

Model	Motor H.P	No. of Cylinder	FAD cfm at 35 kg/cm ² g	Max .Working Pressure kg/cm ²
PC-70-40	40	3	110	42
PC-71-50	50	3	137	42
PC-72-60	60	3	165	42
PC-73-75	75	3	195	42
PC-74-100	100	3	236	42
PC-75-120	120	3	295	42
PC-76-150	150	3	354	42
PC-77-180	180	3	425	42
PC-78-215	215	3	510	42

Single Stage Reciprocating Air- Compressors Specifications

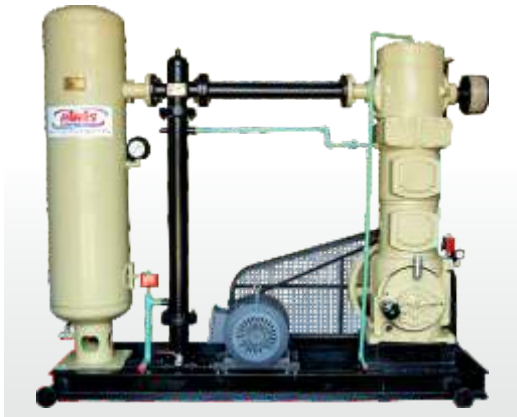


Application Industries:

Air Jet Cleaning, Diaries, Spray Printing, Chemical Plants, Oil Extraction, Agriculture, Air Lift Pumps, Plastic Processing Units, clay & Potteries, Food, etc.

Model	Motor H.P	No. of Cylinder	Piston Displacement C.F.M	Max. Pressure		Air Receiver (Liters)
				PSIG	kg/cm ²	
PC-23-S1	1	1	4.12	100	7.00	70
PC-23-SS2	2	2	8.25	125	8.79	70/100
PC-23-SS3	3	2	13.75	125	8.79	100/150
PC-23-235	3	2	14.85	80	5.62	150
PC-23-244	5	2	26.50	80	5.62	200
PC-23-244	7.5	2	34.60	80	5.62	200
PC-23-255	7.5	2	40.00	80	5.62	240/300
PC-23-255	10	2	52.80	80	5.62	240/300
PC-23-7S2	12.5	2	88.00	40	2.81	300
PC-23-115S	15	3	95.40	60	4.21	500
PC-23-15S2	15	3	111.00	40	2.81	500
PC-23-15S2	20	3	148.50	40	2.81	500

Water Cooled Single Stage / Double Acting Lubricated / Non-lubricated/ Skid Mounted Compressor



Model	Motor Hp	No Of Cylinder	Piston Displacement C.F.M	Max. Pressure		Free Air Delivery
				PSIG	Kg/cm ²	
75LUB/NL	20	1	109	125	8.78	77/23
75LUB/NL	25	1	131	125	8.78	93/88
75LUB/NL	30	1	164	125	8.78	110/100
85LUB/NL	40	1	215	100	7.0	160/150
955LUB/NL	40	1	274	60	4.21	170/160
87LUB/NL	50	1	260	125	8.78	171/160
97LUB/NL	60	1	329	110	7.70	240/222
1277LUB/NL	125	2	679	125	8.78	547/512
16107 LUB/NL	225	2	1215	125	8.78	1031/987

Application: Cement, Textiles, Sugar, Petrochemicals, Iron & Steel, Tanneries, Fertilizers, Glass, Foundries & Refineries, Pharmaceuticals, Rubber, etc.

Single & Two Stage Dry Vacuum Pump Specifications, Air Cooled



Application Industries: Ceramic/Paper Mill/ Hospitals, Carbon & Asbestos processing etc.

Vacuum Pump - Single Stage

Model	Motor H.P.	No. of Cylinder	Piston Displacement C.F.M.	Maximum Vacuum
PC-23-235V	2	2	21.6	29" HG
PC-23-244V	2	2	34.6	29" HG
PC-23-255V	5	2	60	29" HG
PC-23-7V	7.5	2	110	29" HG
PC-23-15V	10	3	149.6	29.2" HG

Vacuum Pump - Two Stage

Model	Motor H.P.	No. of Cylinder	Piston Displacement C.F.M.	Maximum Vacuum
PC-23-235VT	2	2	10.8	29.6" HG
PC-23-244VT	2	2	17.3	29.6" HG
PC-23-255VT	5	2	30	29.7" HG
PC-23-7VT	7.5	2	55	29.6" HG
PC-23-15VT	10	3	99	29.6" HG

Two Stage Reciprocating Air- Compressors Specifications



Model	Motor H.P	No. of Cylinder	Piston Displacement C.F.M	Max. Pressure		Air Receiver (Liters)
				PSIG	kg/cm ²	
PC-23-234	2	2	7.46	175	12.3	150
PC-23-234	3	2	9.74	175	12.3	150
PC-23-2340	3	2	11.25	175	12.3	150
PC-23-242	5	2	17.32	175	12.3	200/250
PC-23-2475	5	2	17.32	175	12.3	200/250
PC-23-2475	7.5	2	22	175	12.3	200/250
PC-23-253	7.5	2	26.4	175	12.3	250/300
PC-23-2545	7.5	2	29.85	175	12.3	250/300/500
PC-23-2545	10	2	37.82	175	12.3	250/300/500
PC-23-2600	10	2	34.42	175	12.3	250/300/500
PC-23-2600	10	2	36	175	12.3	250/300/500
PC-23-71T2	10	2	40	175	12.3	300/500
PC-23-71T2	12.5	2	44	175	12.3	300/500
PC-23-2545	12.5	2	41.8	175	12.3	300/500
PC-23-71T2	15	2	49.5	175	12.3	300/500
PC-23-7100	15	2	54.95	175	12.3	500
PC-23-15T	15	3	68.16	175	12.3	300/500
PC-23-15T	20	3	81.8	175	12.3	300/500
PC-23-7100	20	2	60.44	175	12.3	500
PC-23-25T2	20	3	82.42	175	12.3	500
PC-23-25T2	25	3	104.4	175	12.3	500
PC-23-25T2	30	3	115.4	175	12.3	500

Application Industries:

Pneumatic Press, Road Building Machines, Ceramic, Pneumatic Tools, Ore Processing, Rubber Factories, Steel Fabrication, Automobiles, Foundries, Textiles, Pharmaceuticals, Service stations, etc.

NOTE: ABOVE MODELS AVAILABLE ON REQUEST FOR HIGHER WORKING PRESSURE UP TO 17.5 kg/cm². All Performance as per IS-5456

Standard Scope of Supply

BARE BLOCK	BASE PLATE MOUNTED	AIR RECEIVER MOUNTED (HORIZONTAL)	
Air Compressor	Air Compressor	Air Compressor	Inter stage safety valve
Fly Wheel	Fly Wheel	Fly Wheel	Control - ASSC
Motor Pulley	Motor Pulley	Motor Pulley	Pressure gauge
Suction Filter	Motor Slide Rails	Motor slide rails	Safety valve
Inter Stage safety valve	V-belts, Belt guard	V-belts, belt guard	Drain valve
	Suction air filter	Suction air filter	Service valve
	Inter stage safety valve		

QUALITY COMMITMENT

When efficiency and productivity are important, look to Paras Compressors for 30 years, Paras has built high quality, rock-solid Material Handling Equipment that has stood the test of time; products that have earned Paras worldwide reputation for technical innovation, reliability, and outstanding performance.

We herewith promise complete satisfaction to all PARAS COMPRESSORS product users in lieu of what they have spent on it. Our whole system is quality oriented, weather it is a single piece or a large consignment.

'Long-lasting performance' of our product is the only formula for our survival and success.

The designs/ specifications are subject to change without notice on account of frequent improvement in products quality.

PARAS[®]

COMPRESSORS

📍 L-4104/2, Phase-IV, GIDC, Vatva,
Ahmedabad-382445. (Gujarat) INDIA.

☎ +91 79 2584 0168

📠 +91 79 2584 0052

✉ sales@parascompressor.com

